



Government of Maharashtra
Home Department (Ports and Transport)

Transforming The Maharashtra Coastline



Maharashtra Maritime Board



Why Maharashtra?

- The State's share in the total approved industrial projects and total industrial investment in India is **18** per cent and **12** per cent respectively - (August **1991** to November **2022**)
- Contributes **~14%** to India's national income (**2022-23**)
- The Gross State Domestic Product (GSDP) of Maharashtra for **2023-24** (at current prices) is projected to be **Rs. 38,79,792** crore, amounting to growth of **10%** over **2022-23**.
- Second largest state in India in terms of population with geographical area of about **3.08** lakh sq. km.
- Highly urbanised with **45.2** per cent people residing in urban areas
- Ranks amongst the top five states in the country in terms of GVA, total output, employment and number of factories
- Futuristic policy framework for industrial & maritime growth



LOCATION ADVANTAGE

- **720 km** long coastline with extensive network of creeks
- MMB acting as Conservator, Regulator and Facilitator of **48 Non-Major Ports**
- Presence of **2 Major Ports** - Jawaharlal Nehru Port and Mumbai Port
- Well Connected through **18 National Highways;** **5,984 kms** of railway network and airports
- Robust Hinterland connectivity
- Strategically located on international sea trade route



About Maharashtra Maritime Board

- Constituted in 1996 to conserve, regulate, administer and manage the Non – Major Ports of Maharashtra
- Development of Non Major Ports and Harbors for promoting cargo movement
- Responsible for Regulation and Promotion of Passenger water transport and watersports

Vision

“To be a highly effective, proficient, accountable and progressive maritime agency that is committed to position Maharashtra as a leading state in terms of maritime activity”

Mission

Accelerate integrated development of Maharashtra coastline by facilitating business friendly environment and port conservation through futuristic policies and innovative port regulatory systems.

Objectives

Facilitator for the Maritime Sector

- Provide infrastructure support and regulatory framework to all maritime activities
- Fast tracking clearances & Hand holding of private sector
- Enhancing revenues to sustain and increase the ambit of its activities
- Capacity building of people employed in the maritime sector



Promote Sustainable Maritime Infrastructure Development

- Developing greenfield ports through public private partnerships (PPP) mode
- Developing shipyards / jetties / marinas
- Creating a conducive policy environment for increasing private sector investments
- Enhancing overall port connectivity through expansion of rail / road / inland waterways / coastal shipping services
- Encouraging cargo transport via inland waterways / coastal shipping
- Creation of infrastructure facilities to promote passenger water transport / Ro-Ro / Ro-Pax Ferry services



Encourage Port-led Industrial and Economic Development

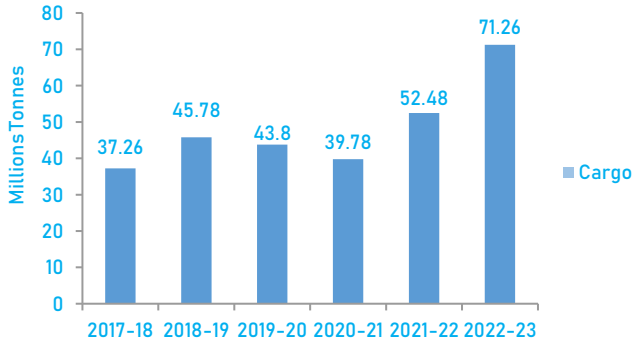
- Developing port-based special economic zones (SEZs) / industrial estates and corridors in consultation with MIDC
- Synchronisation of Industries & port development
- Promoting marine tourism and coastal tourism to boost socio-economic development of coastal areas



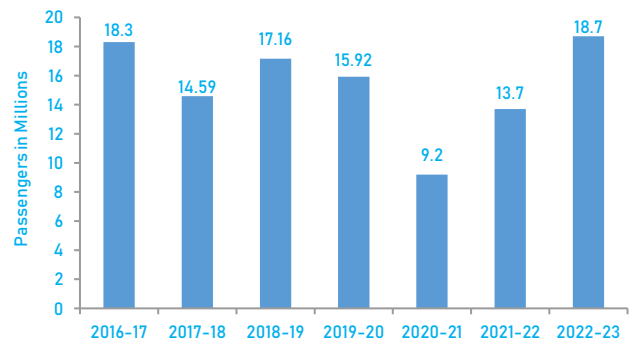


Maharashtra Non-Major Ports Classification

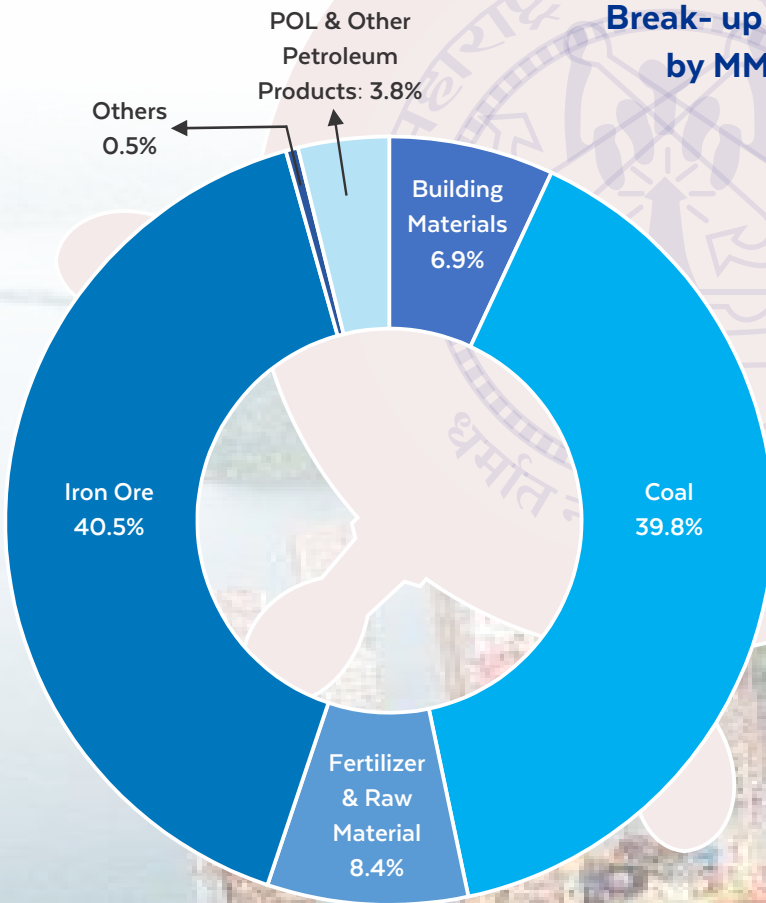
Cargo handling trend of Non-Major Ports (in MMT)



Passenger Traffic at Non-Major Ports (in millions)



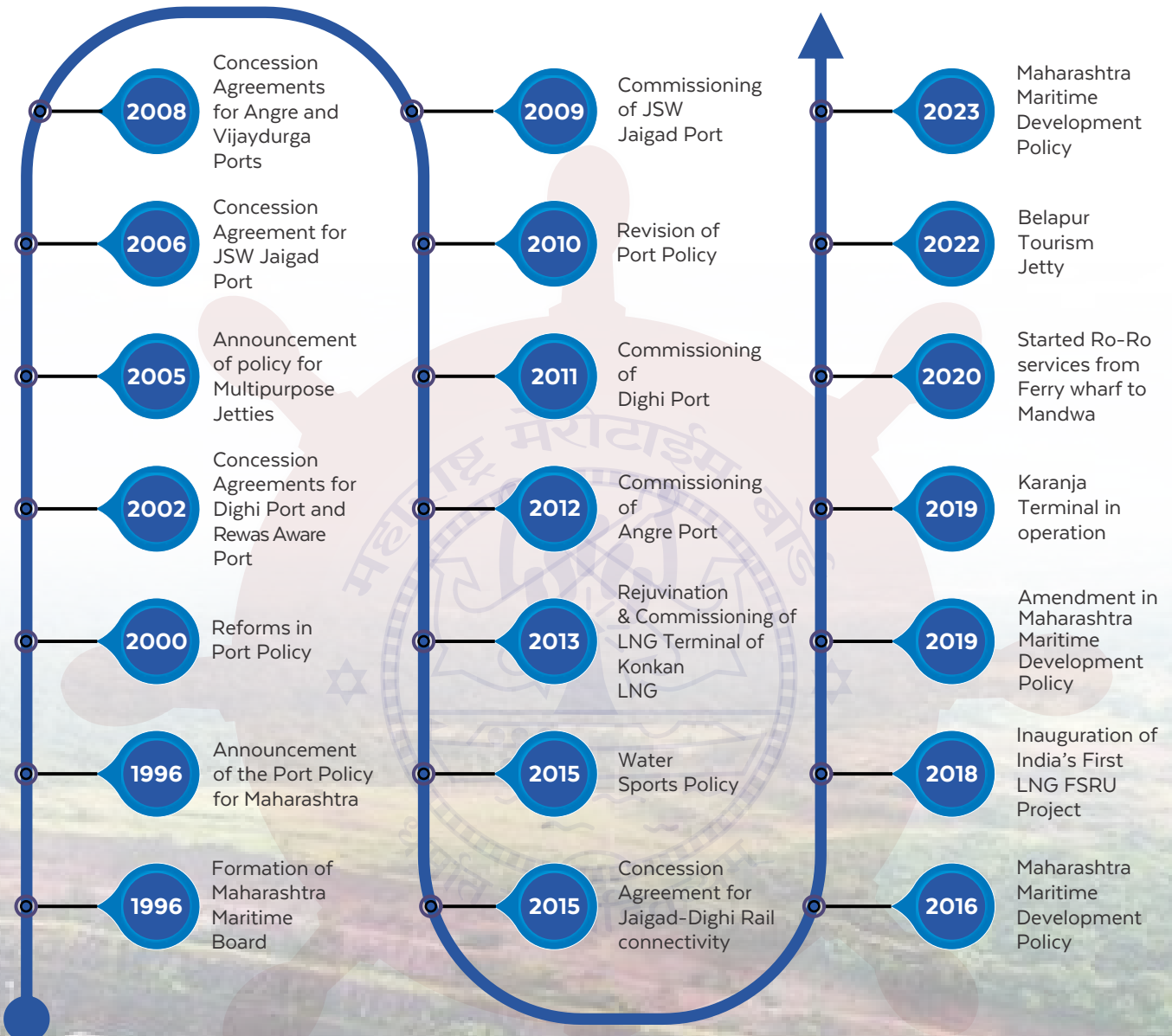
Break- up of Commodities Handled by MMB in Year 2022-23



Commodity	2022-23 (%)
POL & Other Petroleum Products	3.83
Iron Ore	40.50
Coal	39.77
Fertilizer & Raw Material	8.44
Building Materials	6.93
Others	0.52
Total	100.00



MMB's Major Milestones





MMDP 2023: Coverage & Salient Features





Port Projects

Categorisation of Port Projects

Based on Fixed Capital Investments (“FCI”), the upcoming Port Projects are classified as either Micro, Small, Medium, Large or Mega Ports.

S. No.	Category of Port Project	Minimum FCI (INR Crores)	Minimum Cargo Handling Capacity (In MMTPA)
1.	Micro Port	10	1
2.	Small Port	50	10
3.	Medium Port	250	25
4.	Large Port*	750	50
5.	Mega Port*	3000	100

Incentives for greenfield Port Projects

- Approval of ToR for environmental impact assessment for solicited projects
- Exemption from royalty on Minor Minerals
- Exemption from non-agricultural assessment charges
- Exemption from electricity duty
- Exemption from stamp duty
- Applicability of industrial power tariff to PPP Ports
- State goods and services tax (SGST) exemption for inputs required in construction phase of port projects
- Exemption from port dues
- Concessional Water Front Royalty
- Government Land can be made available through MMB and assistance in acquiring private land.

Existing port projects can avail incentives under MMDP-2023 by making investments and achieving prescribed milestones





Captive Jetties



- | Awarded on nomination basis.
- | Eligibility based on industry classification (Large Scale or above per Maharashtra Industrial Policy) and Industry must be operational.
- | Optimum utilisation of jetties by exploring opportunities for 3rd party cargo.



Floatels

- Huge scope for floatel operation
- Currently two floatels at Belapur and Ghodbunder, Thane in operation
- MMDP 23 provides attractive incentives to floatels





Shipbuilding and Ship Repairing/Ship Recycling

Maharashtra, being the hub for shipping activities over the centuries, provides excellent opportunities for ship-building and ship repair



SHIPYARDS INCENTIVES

- Up to 50% WFR exemption for raw materials used in shipbuilding (5 years from COD).
- Exemptions for stamp duty, SGST, and industrial power tariff.
- Reimbursement of electricity duty.
- Package Scheme of Incentives (PSI) for Ship Building Industries.
- PSI determined by HPC and Cabinet sub-committee for Large and Mega projects.
- Industrial Policy compliance for incentives.



Marinas

First Marina to come up at Belapur

- Will house 30 boats in first phase
- Provide safe and secure facility for berthing and maintenance of speed boats, yachts, etc.
- Decongest water area off Gateway of India & facilitate safe navigation





Offshore/Coastal Recreation

Cruise Tourism

The Indian cruise market has the potential to grow by eight times over the next decade, driven by rising demand and disposable incomes

Floatels, Houseboats, and Seaplanes

MMB aims to encourage offshore tourism and travel, improve connectivity and to promote optimum utilisation of jurisdictional waters

Amphibian Buses, Fishing Vessels, Harbour/River Cruises & Floating Cottages

Maharashtra's coastline and Inland Waters have the potential to become a thriving hub for leisure activities such as a variety of cruises and amphibian buses which are a means of travel capable on land as well as on water.

Old Submarines and Warships for Tourism

MMB will encourage the utilization of decommissioned submarines and warships to promote tourism activities



OFF-SHORE / COASTAL RECREATION

- Incentives for various tourism activities, including cruise tourism.
- Concessions on Port Dues and passenger levy for select tourism activities.



OPTIMAL UTILIZATION OF JETTY

- 24x7 operation for all jetties, with MMB-issued SOP.
- Water ambulances allowed to use existing infrastructure



MMDP 2023: Coverage & Salient Features

Concession Period or Lease Period

Type of Project	Concession / Lease Period	Extension Period
Micro Port and Small Port	Up to 30 years	Up to 20 years
Medium Port and Large Port	Up to 50 years	Up to 20 years
Mega Port	Up to 70 years	Up to 20 years
MMB Jetty	Up to 15 years	Up to 15 years
Captive Jetties	Up to 30 years or till the industry exists	Up to 30 years (Only for existing Captive Jetties)
Shipyards	Up to 30 years	Up to 20 years
Ship Recycling	30 years	20 years
Marina Projects	30 years	20 years
Floatel, houseboats and seaplanes	Up to 30 years	Up to 5 years

Coastal Shipping and Inland Waterways



INCENTIVES

- 50% WFR concession for non-captive cargo via Coastal Shipping in Maharashtra or from other Indian Ports.
- VAT exemption on High Flash High Speed Diesel (HFHSD) for Ro-Ro/Ro-Pax within Maharashtra.



PORT - LED INDUSTRIAL DEVELOPMENT

- Establishment of "Port Area Development Authority" (PADA) for holistic planning.
- Promotion of coastal industrial corridor, SEZs, Maritime Clusters, and port linkages.
- Land acquisition for industrial estates near Large, Mega, and Medium Ports Port-Led Industrial Development



SKILL DEVELOPMENT

- Capital assistance of up to 60% of project cost for educational institutes and skill development centers.
- Encouragement for Operators to contribute to skill development through CSR initiatives.



SUSTAINABLE MARITIME DEVELOPMENT

- Operators are encouraged to comply with "Harit Sagar" - Green Port Guidelines.



COMPENSATION FOR FISHERMEN

- Follow Compensation Policy of the Department of Fisheries for projects impacting fishermen's livelihood.



CONNECTIVITY INFRASTRUCTURE

- Road connectivity development to nearest NH/SH by State Government.
- Rail connectivity as per State/Central Government policies.



LAND VALUATION AND ALLOTMENT

- Government land included in the project area transferred to MMB at Re 1 per annum.
- ITZ Land valued based on ready reckoner rates.
- Reclaimed ITZ land leased to operator with an upfront payment equal to land value.



Passenger Water Transport

Operational Passenger Water Routes in Maharashtra

- | | | |
|----------------------------|---|--|
| 1. Madh to Versova | 13. Ferry Wharf - Mandwa (RoRo / RoPax) | 24. Jaigad - Tavasal (RoRo / RoPax) |
| 2. Manori to Marve | 14. Belapur - Nerul | 25. Kundli - Jambhari |
| 3. Gorai to Borivali | 15. Belapur - Elephanta | 26. Padave - Satiwade |
| 4. Borivali to Essel world | 16. Thal - Khanderi Island | 27. Dabhol - Dhopave Ferry Boat (RoRo / RoPax) |
| 5. Marve to Essel word | 17. Rajpuri - Janjira Killa | 28. Dabhol - Veldur |
| 6. Arnala to Arnala Killa | 18. Murud Bundar - Janjira Killa | 29. Dabhol - Navanagar |
| 7. New Ferry Wharf - Mora | 19. Dighi - Agardanda (RoRo / RoPax) | 30. Farare - Parchuri |
| 8. New Ferry Wharf - Rewas | 20. Dighi - Agardanda | 31. Vesvi - Bagmandla (RoRo/ RoPax) |
| 9. Gateway - Elephanta | 21. Dighi - Janjira Killa | 32. Vesvi - Valmiki Nagar |
| 10. Gateway - Mandwa | 22. Khora Bunder - Janjira Killa | 33. Ambet - Mhapral |
| 11. Karanja - Rewas | 23. Hatis - Tonde | 34. Malvan Jetty - Sindhudurg Killa |
| 12. Mora - Sasoon Dock | | |



Upcoming Projects

National Waterway No - 53

- ◆ Jetties At Bhayandar, Kalher, Kolshet & Dombivli in Phase 1
- ◆ Jetties At Mithbunder, Mulund, Airoli, Vashi along with dredging in Thane creek in Phase 2



Passenger Terminal at Radio Club

- ◆ Iconic passenger terminal with an aim to decongest the traffic at Gateway of India. and provide safe and secure embarking and disembarking for passengers.
- ◆ Will connect Southern Mumbai with Navi Mumbai International Airport through waterways.





Passenger Water Transport

Upcoming Projects

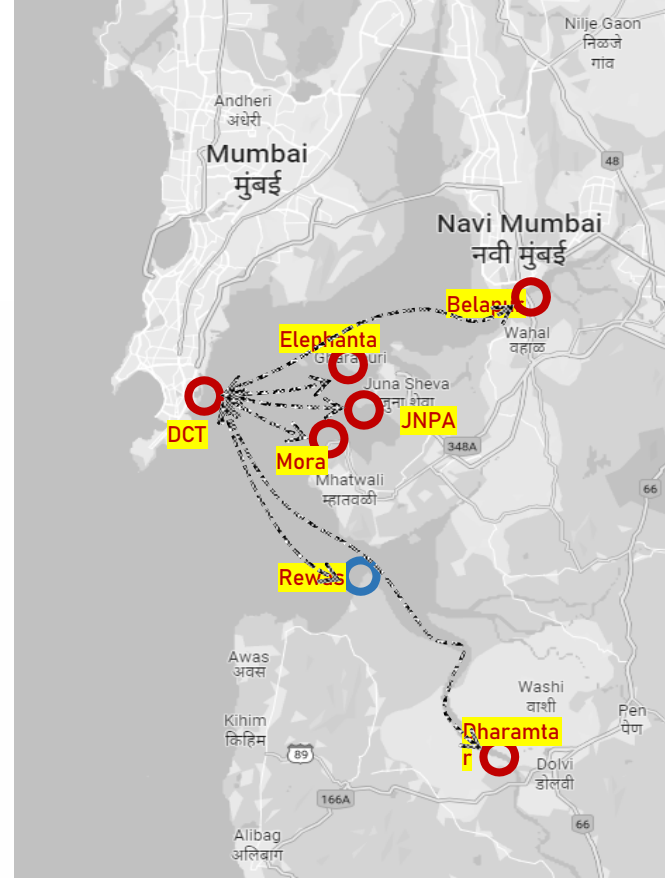
Ro-Pax - DCT to Mora Kashid Dighi



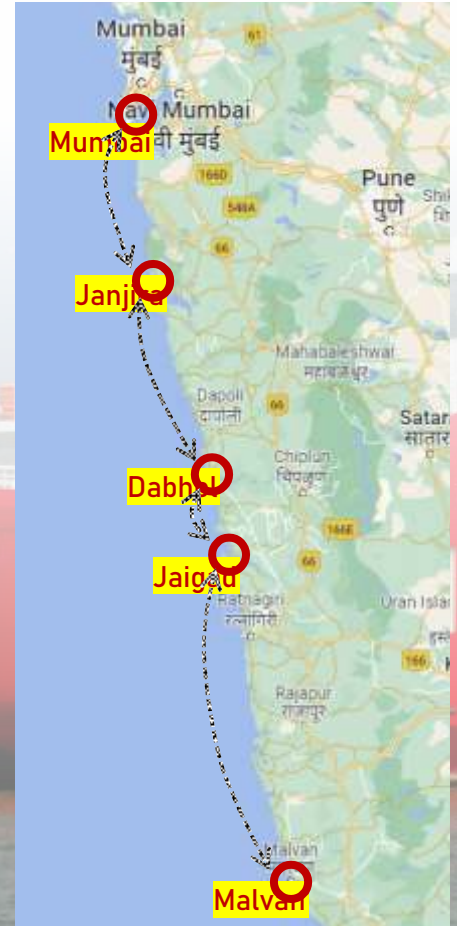
Other Upcoming Ro-Ro routes

- ◆ Narangi to Kharwadeshwari
- ◆ Vasai to Bhayander
- ◆ Gorai to Borivali
- ◆ Manori to Marve
- ◆ Karanja - Rewas
- ◆ Ambadave - Toradi
- ◆ Dabhol - Veldur

Water Transport Circuit on Eastern Mumbai Coast



Fort Tourism Circuit



Forts along Maharashtra Coastline



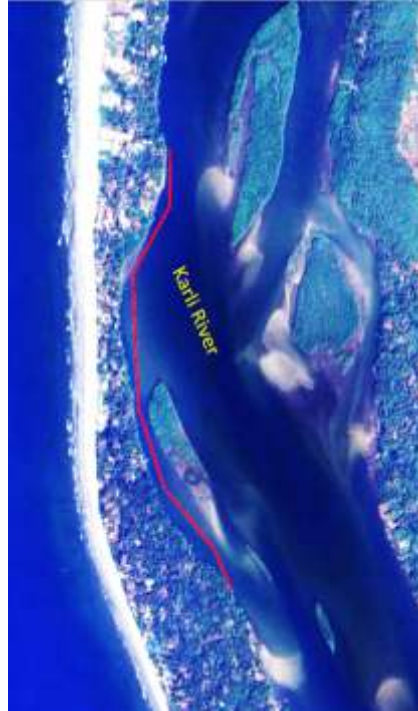


Green Solutions for Coastal Erosion

Maharashtra Sustainable Climate Resilient Coastal Protection Management Program (Tranche-II)

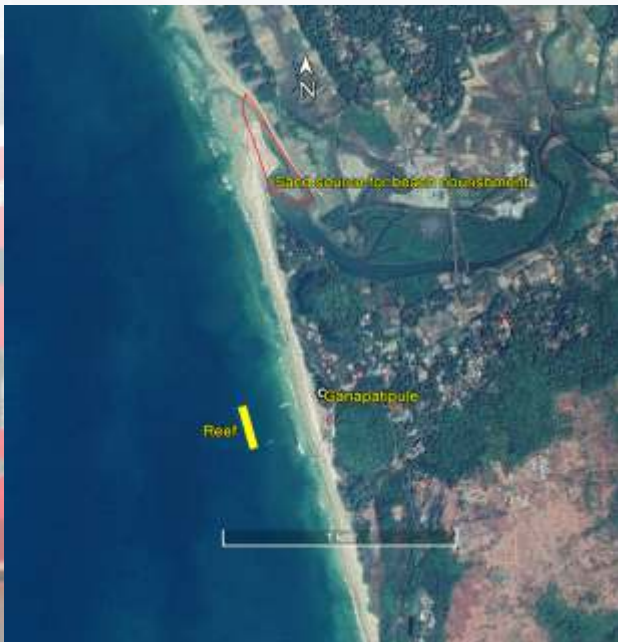
1. Riverbank Protection Wall At Devbag Dist-Sindhudurg

- ◆ Riverbank protection for about 1.4km of the most vulnerable and critical stretch of Karli river
- ◆ De-siltation of the Karli river for navigational safety and beneficial use of the de-silt material for backfilling, maximum 0.2 million m³ of sand



2. Construction Of Offshore Reef At Ganapatipule Dist-Ratnagiri

- ◆ Construction of a 200 m long reef in 3 m depth below CD. The reef crest will be at high tide (3.4 m above CD) and 300 m offshore of the temple.
- ◆ 40,000 cum beach nourishment in front of the Temple using sand from the Ganapatipule River





3. Dune Nourishment work at Kashid Dist-Alibag

- ◆ The proposed coastal protection scheme at Kashid is dune nourishment, planting and fencing.



Pool of Opportunities

GLANCE - OPPORTUNITIES AT MMB





Stakeholders of MMB





Connect with us further:

Maharashtra Maritime Board

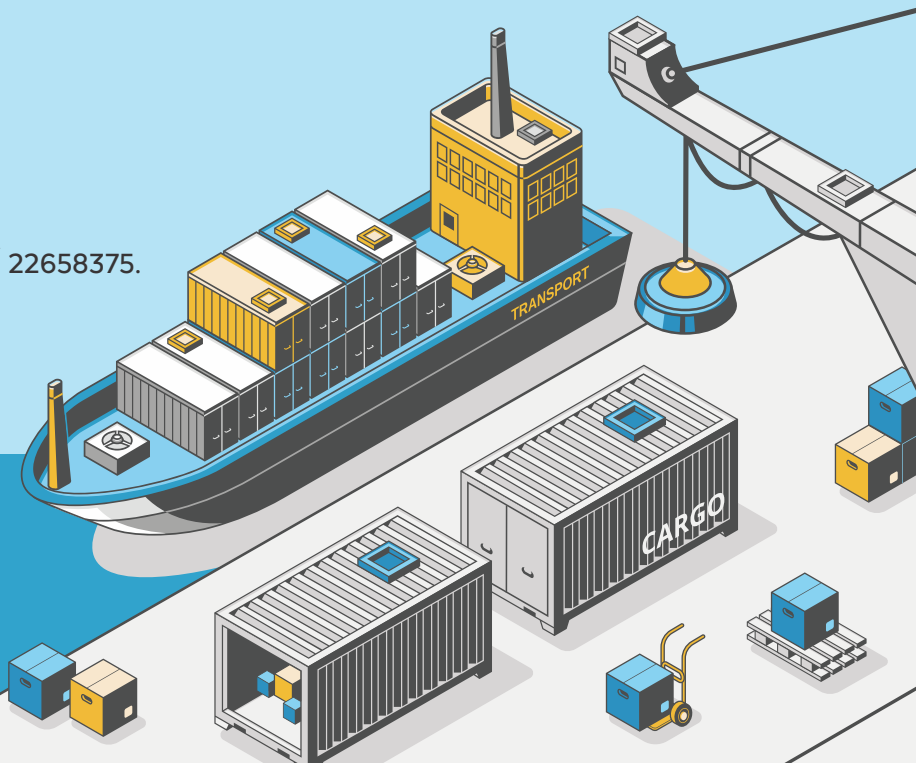
2nd Floor, Indian Merchantile Chambers,
14 Ramjibhai Kamani Marg,
Ballard Estate, Mumbai - 400001

Telephone: +91 2222612143 / 22692409 / 22658375.

Fax: +912222614331

Website: mahammb.maharashtra.gov.in

Email: ceommb@gmail.com



Maharashtra Maritime Board